

Customer :

customer

Customer part :

customer part

Comment :

Comment

S1=0.74

S2=12.31

Tmax=441

Tp S2=480.0

PI=0.06

HI=244

Sample =9107

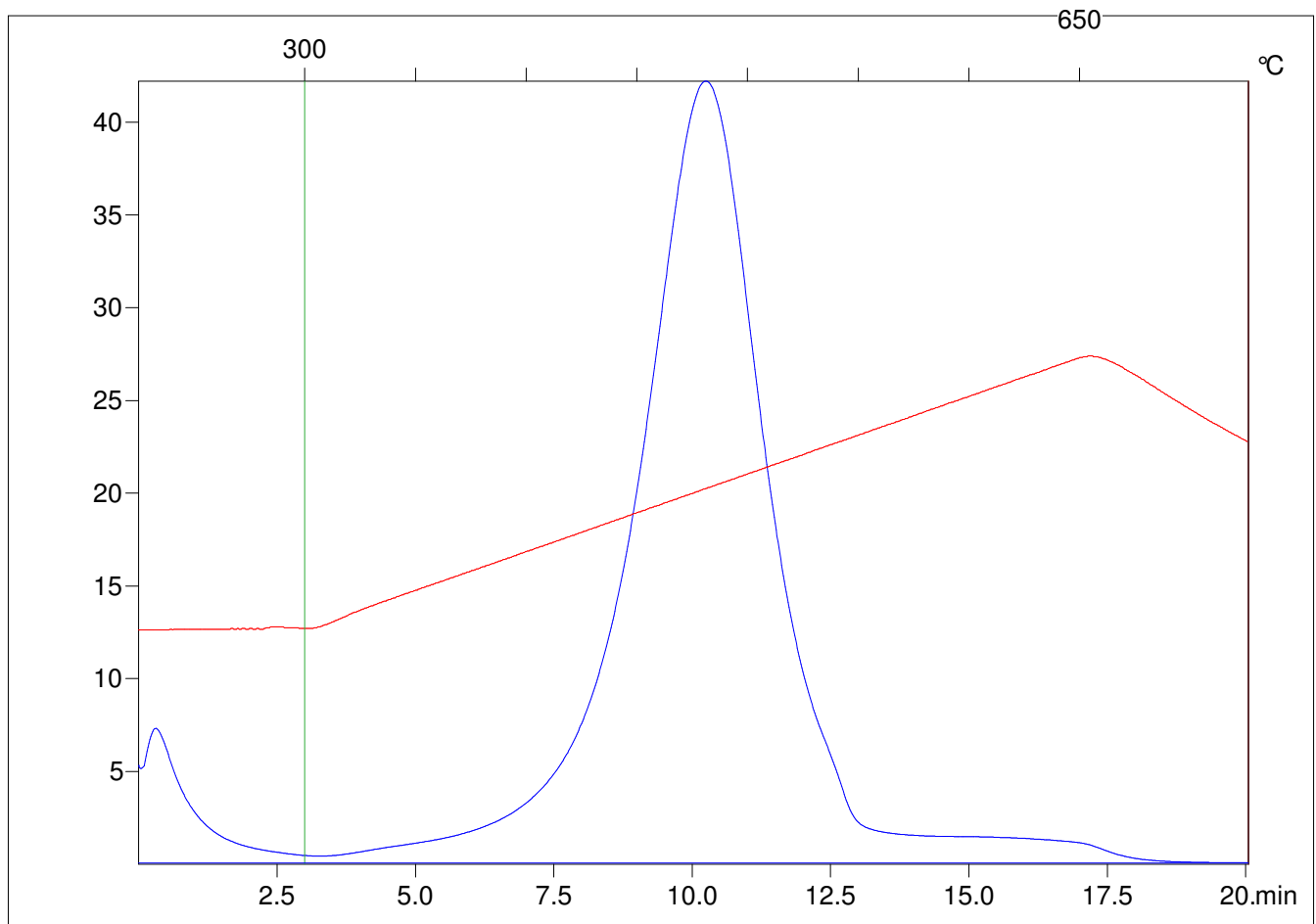
Method =Bulk Rock

Cycle=Basic

KFID(10\*9)=1167

Qty =70.2

TOC=5.05



C:\VINC\PK141021\PK022.R00 : FID pyrolysis graphic

State

Pyro Status

Oxi Status